

THE

CANCER

NEWSLETTER

11800 Sunrise Valley Drive, Reston, Virginia 22091 Phone 703-471-9655

Volume 1 No. 1

Dec. 21, 1973

Subscription rate: \$100 Per Year

Research Opportunities In Pancreas

Cancer Described; Top Priority Set

The "surging incidence" of pancreatic cancer, which will cause 20,000 deaths a year by 1975 making it the fourth leading cancer killer, "has put this cancer site in the major leagues," James A. Peters, director of NCI's Division of Cancer Cause & Prevention, told the National Cancer Advisory Board.

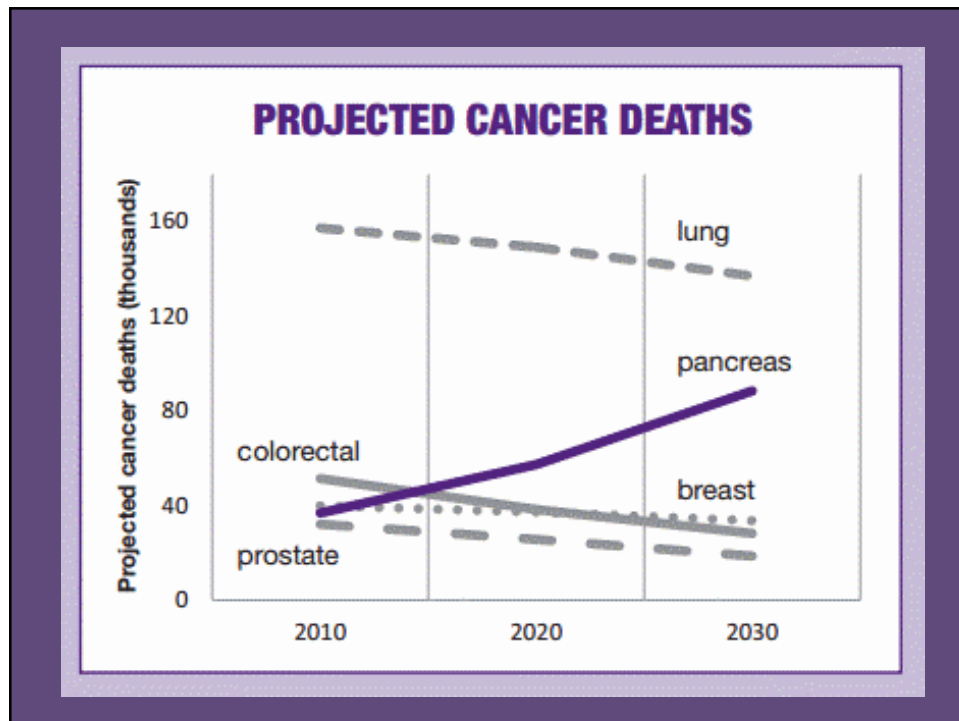
Cancer of the pancreas thus has gained a spot in the national cancer program as a major priority for concentrated, sharply targeted action. A big increase in research activity may be expected during the next year, Peters and others emphasized in their presentations to the NCAB.

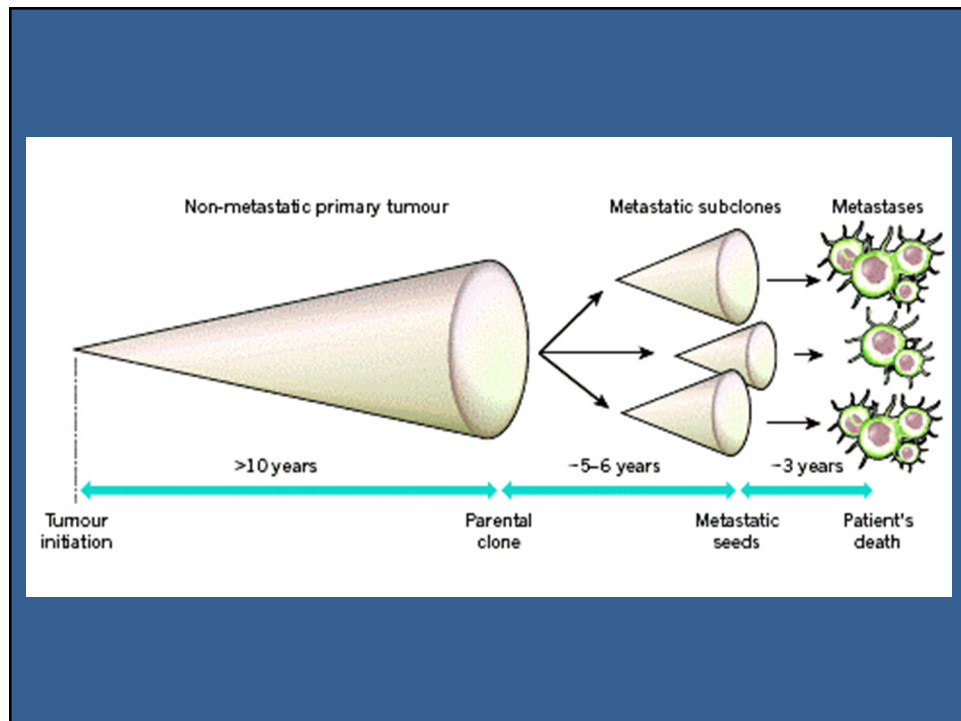
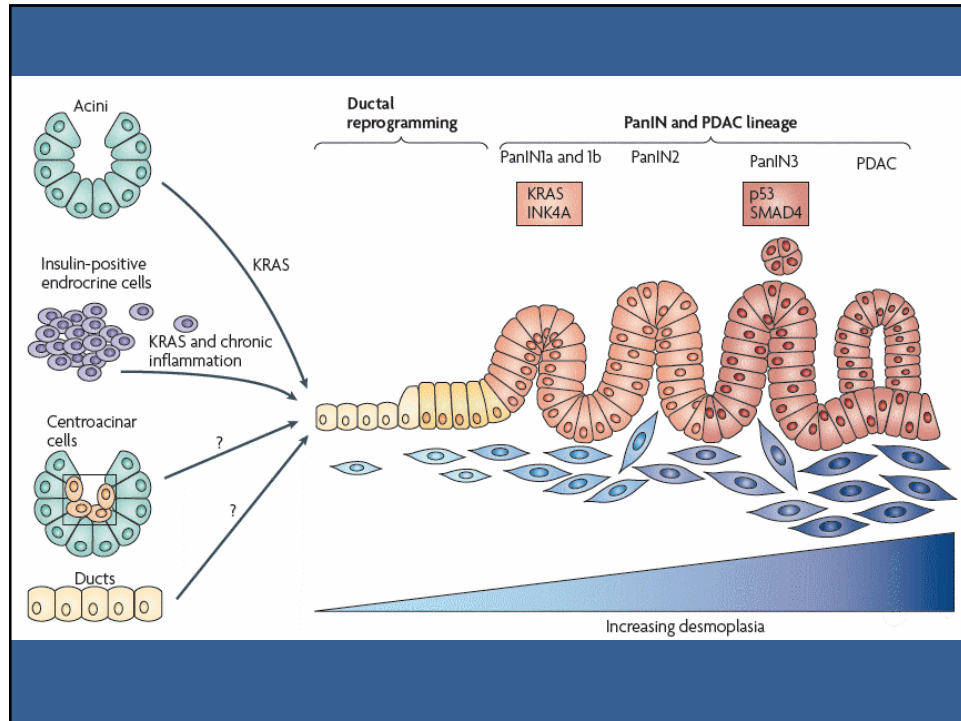
Extremely low survival rates, difficulty of early diagnosis and lack of response to treatment and surgery characterize the disease. But a growing number of clues indicate it is an "essentially man-made disease, and therefore by definition a preventable one," Peters said.

"The profile of the individual at high risk for cancer of the pancreas is that of a heavy smoker on a western diet high in cholesterol and fat. Other minor factors may be city living, race, a family history of multiple polyposis, and the ataxiatelangectasia syndrome," Peters said.

"Desirable and feasible research" Peters said is needed includes:

- Consideration of anatomical characteristics of the tumor; whether it originates in acinar or duct

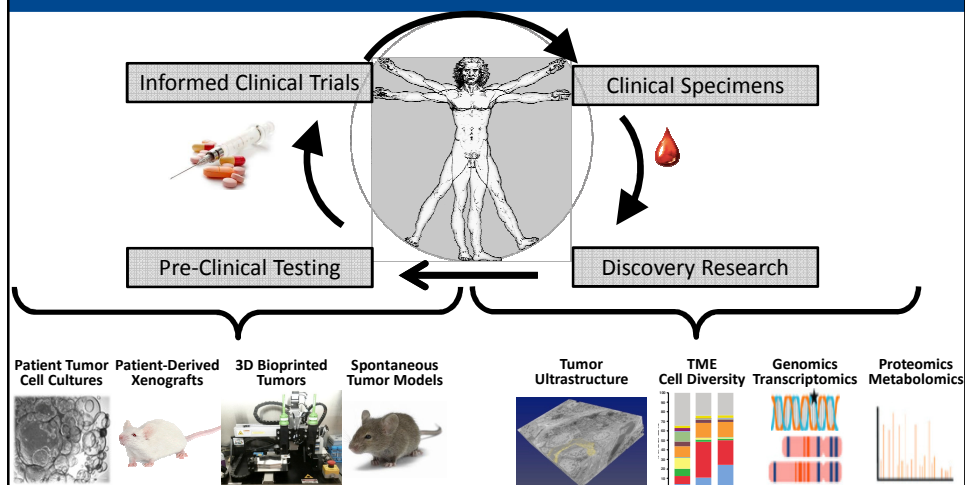




The Brenden-Colson Center for Pancreatic Care will be a patient centric hub for clinical and research programs that advance the early detection, treatment, and cure of lethal and debilitating pancreatic diseases and to improve the quality of life for patients and their caregivers.

THE BRENDEN COLSON CENTER
FOR PANCREATIC CARE AT OHSU

The Continuous Discovery Loop



THE BRENDEN COLSON CENTER
FOR PANCREATIC CARE AT OHSU

