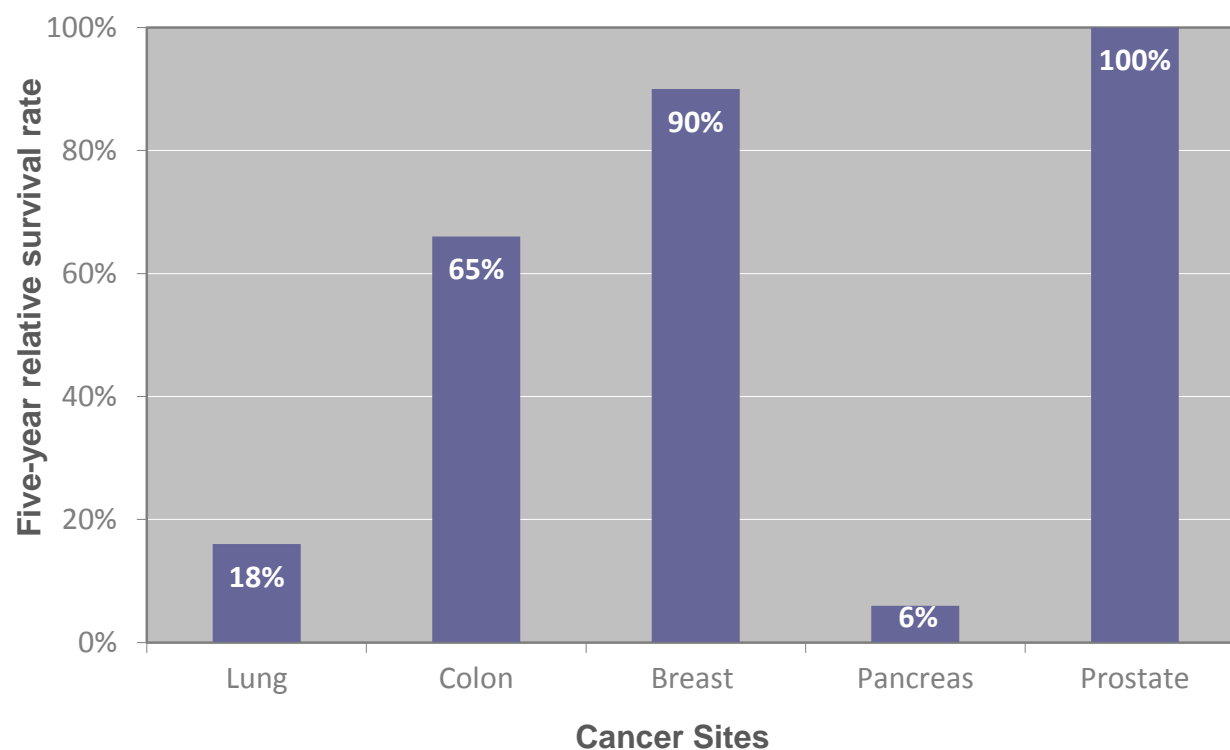




PANCREATIC CANCER ACTION NETWORK®
ADVANCE RESEARCH. SUPPORT PATIENTS. CREATE HOPE.

www.pancan.org | 877-272-6226

2014 Five-Year Relative Survival Rates Top Five Causes of Cancer Death



Pancreatic Cancer Is Still the Deadliest Cancer, and the Threat Is Growing

The five-year relative survival rate for pancreatic cancer is just 6%, and there are still no early detection tools and only minimally effective treatments. Even more alarming, it is projected to surpass breast and colorectal cancer to become the second leading cause of cancer-related death in the United States by 2020.

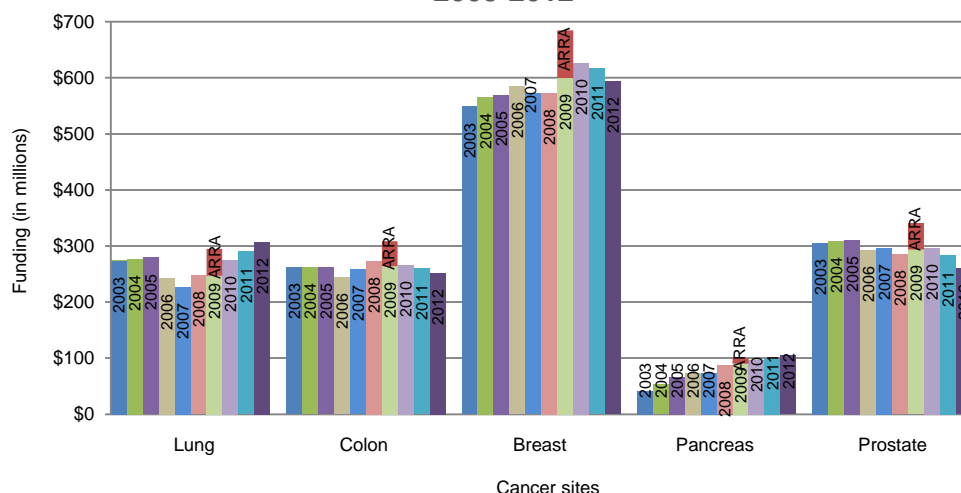
"Major cancer" is defined as one tracked by both the American Cancer Society and the National Cancer Institute.

©2014 Pancreatic Cancer Action Network. All Rights Reserved.

Source: American Cancer Society. *Cancer Facts and Figures*, 2014.
Atlanta: American Cancer Society, 2014.



National Cancer Institute (NCI) Annual Funding Top Five Causes of Cancer Death 2003-2012¹

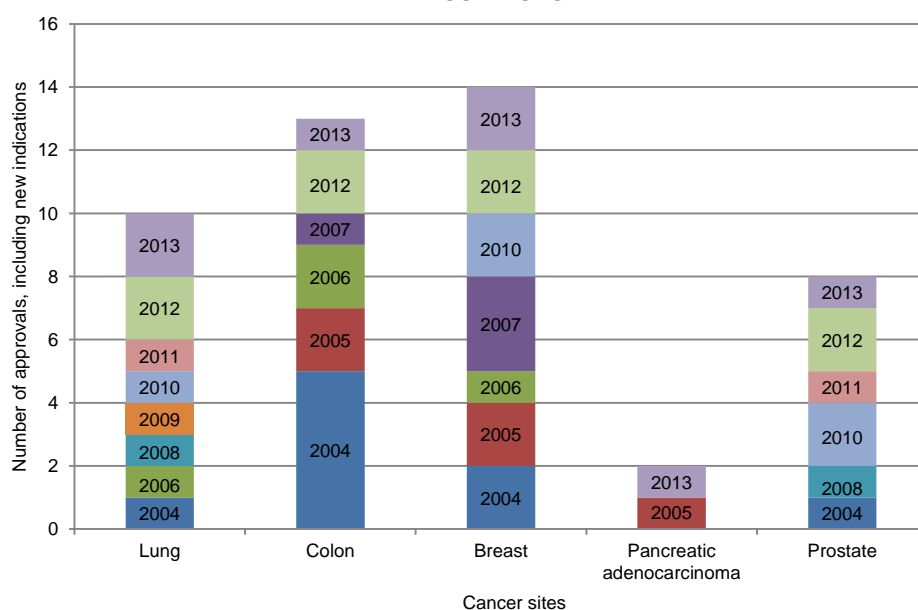


Sources: NCI Annual Fact Books and NCI Funded Research Portfolio <http://fundedresearch.cancer.gov>. Accessed May 2013.

Increased Investment Can Change the Prediction

Federal investment in cancer research has led to new treatments and improved survival rates for other diseases. We now need the same type of results in pancreatic cancer. The NCI has issued a "scientific framework" (strategic plan) for pancreatic cancer as a result of the *Recalcitrant Cancer Research Act* of 2012, but it will be very difficult to leverage the opportunities that could result from the new report unless NCI funding levels improve.

Number of Drug Approvals, Including New Indications Top Five Causes of Cancer Death 2004-2013



Sources: Food and Drug Administration www.fda.gov and National Cancer Institute www.cancer.gov. Accessed June 2013 and January 2014.

¹ Under the *American Recovery and Reinvestment Act (ARRA)* of 2009, NCI received supplemental funding for 2009 and 2010 only. The 2010 data have not been published.