

2010-2011



DEAR FRIENDS:

On behalf of everyone in the Pancreatic Cancer Action Network family, we thank you for your generous contributions this past year. The support of donors like you remained steadfast. Our revenue increased by 10 percent compared to our prior fiscal year, a notable achievement at a time when many nonprofit organizations continue to face great challenges due to the economy. Due to this vital support, we continue to provide much-needed and high-quality services and programs for the nation's pancreatic cancer community.

Our approach to fighting pancreatic cancer is comprehensive, effective and far-reaching. We directly fund important research grants annually, remain resolute in advocating for more aggressive federal research funding, provide comprehensive services for patients and families facing the disease through our Patient and Liaison Services (PALS) program, and support a robust, all-volunteer network comprising thousands of volunteers nationwide that focuses on furthering our far-reaching community outreach programs. The synergy produced by all these efforts fuels an unprecedented momentum in the pancreatic cancer community as those in our ranks keep growing.

Our considerable accomplishments in 2010-'11 were due to your ongoing support and we remain humbly grateful. Your contributions helped tens of thousands of people at a time in their lives when they need it the most.

We hope you enjoy reviewing this year's annual report.

Warmest regards,



Peter Kovler

Chair



Julie Fleshman, JD, MBA

President and CEO

BOARD MEMBERSHIP*

BOARD OF DIRECTORS

Peter Kovler
Chair
Washington, D.C.

Laurie MacCaskill
Vice Chair
Los Angeles, California

Stephanie R. Davis, JD, MA
Secretary
Sherman Oaks, California

Tim Ennis
North Port, Florida

Julie Fleshman, JD, MBA
President and CEO
Los Angeles, California

Stevan Holmberg, MBA, DBA
Potomac, Maryland

Jason Kuhn
Tampa, Florida

Jai Pausch
Chesapeake, Virginia

Stuart Rickerson
Treasurer
Rancho Santa Fe, California

Cynthia Stroum
Founding Chair Emeritus
Seattle, Washington

SCIENTIFIC ADVISORY BOARD

David Tuveson, MD, PhD
Chair
Cambridge Research Institute/CRUK

Dafna Bar-Sagi, PhD
New York University

Teri Brentnall, MD
University of Washington

Michael Hollingsworth, PhD
University of Nebraska
Medical Center

Ralph Hruban, MD
Johns Hopkins University

Elizabeth Jaffee, MD
Johns Hopkins University

Craig Logsdon, PhD
MD Anderson Cancer Center

Margaret Mandelson, PhD
Fred Hutchinson Cancer
Research Center

Gloria Petersen, PhD
Mayo Clinic

Margaret Tempero, MD
University of California,
San Francisco

Selwyn Vickers, MD
University of Minnesota

Geoffrey Wahl, PhD
Salk Institute

MEDICAL ADVISORY BOARD

Jordan Berlin, MD
Chair
Vanderbilt-Ingram Cancer Center

Marcia Canto, MD
Johns Hopkins University

Christopher Crane, MD
MD Anderson Cancer Center

Jason Fleming, MD
MD Anderson Cancer Center

Jane Hanna, RN, OCN
Georgetown University Hospital

Mokenge Malafa, MD
Moffitt Cancer Center

Mary Mulcahy, MD
Northwestern University

Eileen O'Reilly, MD
Memorial Sloan-Kettering
Cancer Center

Maria Petzel, RD, CSO, LD, CNSC
MD Anderson Cancer Center

Vincent Picozzi, MD
Virginia Mason Medical Center

Mark Pochapin, MD
Jay Monahan Center for
Gastrointestinal Health

Mark Talamonti, MD
NorthShore University HealthSystem

*As of June 30, 2011



Supporters attend the eighth annual Walk Through the Vineyards in St. Helena, California.

ABOUT THE PANCREATIC CANCER ACTION NETWORK

The Pancreatic Cancer Action Network, Inc., was founded in 1999 to focus national attention on a disease that is the fourth leading cause of cancer death in the United States but receives far less attention than cancers of comparable severity. Initially created as a grassroots organization, it has become the national leader in the quest to defeat pancreatic cancer. The Pancreatic Cancer Action Network fulfills its mission through a comprehensive strategy that combines directly funding research, advocating for increased federal dollars for pancreatic cancer scientists around the country, providing patient services, and extending community outreach and education nationwide through a network of dedicated volunteers.

The organization is now leading the way for those diagnosed with the disease through a bold initiative—*The Vision of Progress: Double the Pancreatic Cancer Survival Rate by 2020*. Together, we can know, fight and end pancreatic cancer by intensifying our efforts to build a comprehensive pancreatic cancer research community that will be poised to advance early diagnostics, better treatments and increase chances of survival.

RESEARCH AND SCIENTIFIC AFFAIRS

Scientific understanding of pancreatic cancer has historically been hindered by limited private and federal funding and a sparse and fragmented research community. We solve this problem by advancing the development of a robust pancreatic cancer research community and providing it with tools to share resources and discoveries.

Through our research grants program, we attract investigators with innovative ideas and brilliant early-career scientists to study pancreatic cancer. Beyond the financial support of their research projects, we convene these investigators for knowledge sharing, collaboration and mentorship. Simultaneously, we work to increase federal research funding available for pancreatic cancer scientists through our advocacy efforts in Washington, D.C., and at the National Cancer Institute.

Our strategy is working. In early 2011, the Pancreatic Cancer Action Network rigorously evaluated its research grants program, focusing on investigators who received grants between 2003 and 2009. The evaluation results are extremely encouraging: Our grant recipients are staying in the field of pancreatic cancer, receiving impressive funding to support subsequent research, and publishing their findings in reputable biomedical journals.

During that period, the Pancreatic Cancer Action Network research grants program distributed funding totaling \$4.8 million. Since then, our grant recipients have secured \$41.8 million in subsequent funding. In other words, for every dollar invested by the Pancreatic Cancer Action Network, our grant recipients have been awarded \$8.61 in additional pancreatic cancer research funding. The 36 grant recipients evaluated published 219 pancreatic cancer-related articles in peer-reviewed journals. The number of published articles shows that these grant recipients are generating high-quality results that are being disseminated, allowing other researchers to build upon their findings.



The organization's integrated role in the scientific community through participation in and the leadership of scientific conferences and committees affords us the opportunity to look broadly at the pancreatic cancer research landscape. From this unique perspective, we are able to employ a steady, committed strategy to build a strong research community that will make lifesaving discoveries. Our supporters invest in this strategy, rather than a series of isolated tactics.

RESEARCH HIGHLIGHTS IN 2010-'11

- Since 2003, the Pancreatic Cancer Action Network has awarded 66 research grants at prestigious biomedical research institutions across the country, representing a cumulative investment of more than \$10 million.
- The organization increased its annual research funding by almost 30 percent when compared to the previous year, awarding ten pancreatic cancer research grants totaling nearly \$3 million. The grants program is administered in partnership with the American Association for Cancer Research (AACR) to ensure a rigorous peer-review process and funding of only the highest quality science.

• At the October 2010 scientific session with the organization's Scientific and Medical Advisory Boards, grant recipients presented their research progress and engaged in discussions with leading scientists.

- Grant recipients took part in professional development activities facilitated by the Pancreatic Cancer Action Network, including mentorship by senior scientists, networking opportunities, involvement in Pancreatic Cancer Advocacy Day, attendance and presentations at scientific conferences, and participation in scientific review committees.



“I am attempting to identify all predisposition genes using a unique panel of familial pancreatic cancer cell lines and whole genome sequencing. This work can only be accomplished because of my Pancreatic Cancer Action Network innovative grant and an outstanding collaborative team.”

— James Eshleman, MD, PhD
Johns Hopkins University
2011 Pancreatic Cancer Action Network - AACR Innovative Grant

2011 GRANTS

Our research grants program is designed to attract brilliant early-career scientists and investigators with innovative ideas regarding the study of pancreatic cancer. By recruiting the brightest scientists with the most novel ideas, we continue to build a comprehensive research community, poised to make significant scientific discoveries. The Pathway to Leadership Grant, Fellowship Award, and Career Development Awards provide funding at critical times for early-career researchers when they are selecting their areas of scientific focus. Innovative Grants provide funding to investigators at any career level to explore new and leading-edge ideas and approaches in pancreatic cancer research.

PATHWAY TO LEADERSHIP GRANTS



PANCREATIC CANCER ACTION NETWORK – AACR PATHWAY TO LEADERSHIP GRANT

Jennifer Bailey, PhD
 Johns Hopkins University
Stop the Start: Novel Insights into PanIN Initiation and Progression



PANCREATIC CANCER ACTION NETWORK – AACR PATHWAY TO LEADERSHIP GRANT

E. Scott Seeley, MD, PhD
 Stanford University
Transport Proteins as Modifiers of Oncogenic Signaling in Pancreatic Cancer

FELLOWSHIP AWARD



SAMUEL STROUM – PANCREATIC CANCER ACTION NETWORK – AACR FELLOWSHIP

Cosimo Commisso, PhD
 New York University
Pancreatic Cancer, Macropinocytosis and Nutrient Internalization

CAREER DEVELOPMENT AWARDS



PANCREATIC CANCER ACTION NETWORK – AACR CAREER DEVELOPMENT AWARD

Dimitrios Iliopoulos, PhD
 Dana-Farber Cancer Institute
Identification of Novel Molecular Circuits in Pancreatic Cancer Stem Cells



TEMPUR-PEDIC® RETAILERS – PANCREATIC CANCER ACTION NETWORK – AACR CAREER DEVELOPMENT AWARD

Kenneth Olive, PhD
 Columbia University
The Role of HIF1 and Hypoxia in Pancreatic Ductal Adenocarcinoma



PANCREATIC CANCER ACTION NETWORK – AACR CAREER DEVELOPMENT AWARD

Jae-II Park, PhD
 MD Anderson Cancer Center
Telomerase in the Development of Pancreatic Cancer

INNOVATIVE GRANTS



PANCREATIC CANCER ACTION NETWORK – AACR INNOVATIVE GRANT

Lisa Cannon-Albright, PhD
 University of Utah
Informative Linkage Analysis of High-Risk Pancreatic Cancer Pedigrees



PANCREATIC CANCER ACTION NETWORK – AACR INNOVATIVE GRANT

James Eshleman, MD, PhD
 Johns Hopkins University
Identifying Familial Pancreatic Cancer Predisposition Genes



ABBY SOBRATO – PANCREATIC CANCER ACTION NETWORK – AACR INNOVATIVE GRANT

Matthias Hebrok, PhD
 University of California, San Francisco
Role of miRNAs in Pancreatic Adenocarcinoma



KOVLER – PANCREATIC CANCER ACTION NETWORK – AACR INNOVATIVE GRANT

Hidde Ploegh, PhD
 Whitehead Institute for Biomedical Research
Generation of Transnuclear Mice from Pancreatic Cancer Infiltrating T Cells



Left, Pancreatic Cancer Action Network President and CEO Julie Fleshman, U.S. Representative Leonard Lance (R-NJ) and Pancreatic Cancer Action Network Government Affairs & Advocacy Director Megan Gordon Don gather at the 2011 Pancreatic Cancer Advocacy Day in Washington, D.C..
Right, hundreds of supporters from around the country gathered on Capitol Hill for the fifth annual Pancreatic Cancer Advocacy Day.

GOVERNMENT AFFAIRS & ADVOCACY

Our Government Affairs & Advocacy program, based in Washington, D.C., focuses on educating elected officials about pancreatic cancer and the need to increase federal research funding dedicated to studying the disease.

GOVERNMENT AFFAIRS AND ADVOCACY HIGHLIGHTS IN 2010 -'11:

- Thanks to the efforts of the Pancreatic Cancer Action Network and its volunteers, support for the *Pancreatic Cancer Research & Education Act* (S. 362/ H.R. 733) is growing on Capitol Hill. The bill was introduced in both the Senate and the House on February 16, 2011 at a press conference on Capitol Hill. The bill's lead Senate sponsor is U.S. Senator Sheldon Whitehouse (D-RI) and the bill's lead House sponsors are U.S. Representative Anna Eshoo (D-CA) and Leonard Lance (R-NJ). Senator Whitehouse and Representative Lance spoke at the press conference, as well as the Pancreatic Cancer Action Network's President and CEO, Julie Fleshman, and National Spokesperson, Lisa Niemi Swayze. Thanks to continued action from our grassroots network, 29 bi-partisan Senators and 127 bi-partisan Representatives had signed on as co-sponsors on the bill by the end of the fiscal year. Our goal is to secure one half of the Senate (50) and one half of the Representatives (218) as co-sponsors of the bill by the end of 2011.

- In June 2011, the Pancreatic Cancer Action Network hosted the fifth annual National Call-In and Pancreatic Cancer Advocacy Day in Washington, D.C. More than 500 registered to attend Advocacy Day, a 21 percent increase compared to 2010. In addition, other supporters participated from home, making almost 3,000 phone calls to Congress during the National Call-In, a 46 percent increase over the year before.
- Supporters across the country raised awareness about pancreatic cancer in their states and home towns by securing 588 proclamations from their state and local elected officials, representing a 39 percent increase compared to 2010.
- Progress continued on building support for the creation of a new federally funded targeted research program focused on the deadly cancers, defined as those

cancers with a five-year survival rate below 50 percent. The Pancreatic Cancer Action Network founded the Deadly Cancer Coalition in 2008 to create a new focus on these issues. This year, support continued to build for the concept in Congress and the Obama Administration, and the coalition met with the National Cancer Institute (NCI) Director Harold Varmus, MD.

- This year, approximately 11,500 advocates sent more than 26,000 email messages, reaching every Congressional office.
- Since the Pancreatic Cancer Action Network's advocacy program was founded in 1999, increasing federal funding for research into the disease has remained a top priority. In 2010, these efforts resulted in an 8 percent increase in NCI funding for pancreatic cancer research at a time when the NCI's overall budget decreased.



At left, Pancreatic Cancer Action Network National Spokesperson Lisa Niemi Swayze appeared at a press conference on Capitol Hill on February 16 to help reintroduce the Pancreatic Cancer Research & Education Act in Congress. Right, U.S. Senator Sheldon Whitehouse (D-RI) speaking at the press conference.



PATIENT AND LIAISON SERVICES (PALS)

The Pancreatic Cancer Action Network's Patient and Liaison Services (PALS) program is a comprehensive and free information and education service for pancreatic cancer patients, their family members and caregivers, and health professionals. Individuals who contact the PALS program are matched with highly trained, dedicated PALS Associates who are available to answer questions and provide information and support. Those in need are encouraged to contact PALS as many times as they wish to get the information they require throughout their pancreatic cancer journey.

The PALS program is the only one of its kind providing quality, detailed information on topics including pancreatic cancer, diagnosis, treatment options, clinical trials, diet and nutrition, specialists and support resources. The goal of the program is to help patients and their families learn about and understand their options so that they may make informed choices together with their medical care teams.

The Pancreatic Cancer Action Network recommends that all pancreatic cancer patients consider clinical trials when exploring treatment options. The PALS program maintains a database of all pancreatic cancer clinical trials taking place in the United States. PALS Associates are able to search this database to provide personalized clinical trial information for interested patients and family members. The PALS program also offers a

library of educational materials and hosts the Pancreatic Cancer Symposium and Lecture Series of in-person educational events held around the country for patients and their families. This year, several Symposia were also accredited to provide nursing contact hours, expanding the scope of these educational opportunities.

In 2010-'11, the PALS program maintained and expanded the impressive services and resources it provides for the pancreatic cancer community. More patients and family members contacted the PALS program than ever before. PALS distributed a record number of materials to health care professionals to use in resource centers, libraries and clinics and to provide to their patients and caregivers. PALS reached more individuals in their communities by hosting educational programs in nine cities across the United States. PALS also provided clinical trial information to more pancreatic cancer patients and caregivers than in previous years.

PALS HIGHLIGHTS IN 2010-'11:

- Nearly 5,000 individuals and families called or emailed the PALS program for pancreatic cancer education, resources, information and support. Additionally, more than 3,000 educational packets were ordered online by individuals seeking information about the disease. The number of individuals contacting PALS increased by four percent over the previous year. Since the inception of the program in 2002, nearly 55,000 patients and their families

have utilized services and resources offered through PALS.

- PALS Associates maintained impressive quality assurance ratings regarding the services they delivered, the helpfulness of materials provided and the timeliness of the receipt of materials, with an average quality assurance score of 97 percent satisfaction.

- The PALS library of educational literature was expanded with the addition of a new booklet and several new fact sheets. Currently, seven booklets are available



“My wife Ginny and I became aware of the PALS program after we began investigating treatment plans following my diagnosis with stage IV pancreatic cancer in 2008. Having PALS as a resource with an abundance of information made the decision process easier; their information and guidance put us on the right track. Knowing that PALS is there with information, support and guidance makes a huge difference in the fight.”

— Stu Jed
Three-year pancreatic cancer survivor
Incline Village, Nevada

in the PALS library: An Overview of Pancreatic Cancer, Diet and Nutrition: Nutritional Concerns with Pancreatic Cancer, Clinical Trials: Participating in a Pancreatic Cancer Study, Hospice: End-of-Life Care in Pancreatic Cancer, Palliative Care: Quality of Life and Practical Care in Pancreatic Cancer, Información General del Cáncer de Páncreas (An Overview of Pancreatic Cancer in Spanish) and La Dieta y Nutrición: Temas Nutricionales Relacionados con el Cáncer de Páncreas (Diet and Nutrition in Spanish). At present, 27 of the 59 PALS fact sheets are also now available in Spanish.

- More than 65,000 pieces of PALS educational literature were distributed free of charge to health professionals in hospitals and clinics across the nation.

- The Pancreatic Cancer Symposium and Lecture Series offered four Symposia in cities across the United States: Los Angeles, Washington, D.C., Chicago and Seattle. PALS, in conjunction with local volunteers, also provided Educational Lectures in Portland, Ann Arbor, Minneapolis, Nashville and New York City. Between these nine educational events, PALS hosted more than 1,000 attendees. The Seattle Symposium was the largest Symposium to date, with nearly 280 attendees including 80 pancreatic cancer survivors.



Survivor photos taken at Pancreatic Cancer Symposia (clockwise, from top left): Seattle, photographed on May 20, 2011; Los Angeles, photographed on October 29, 2010; Chicago, photographed on April 15, 2011; and Washington D.C., photographed on March 19, 2011.



- PALS launched a campaign designed to increase the number of pancreatic cancer patients who participate in clinical trials. As a result, PALS offered nearly 650 personalized clinical trials searches, a 66 percent increase over the previous year.

- PALS provided nearly 2,000 peer-to-peer matches through the Survivor and Caregiver Network. These connections are made by PALS Associates between people facing pancreatic cancer and volunteers who share their personal experiences and offer support, encouragement and hope to others.

- PALS continued to conduct outreach to healthcare professionals and the public so that more pancreatic cancer survivors and caregivers become aware of the services offered through PALS. Additionally, PALS developed new messaging geared towards healthcare professionals with the intent to ensure that pancreatic cancer patients are diagnosed quickly when symptoms are present and are referred to pancreatic cancer specialists and clinical trials.



Left: Signature events such as PurpleStride are run entirely by volunteers, many of whom have been personally impacted by pancreatic cancer.

Right: TEAMHOPE supporters of the National Marathon Team.



COMMUNITY OUTREACH

One of the qualities that makes the Pancreatic Cancer Action Network such a unique organization is its highly effective volunteer network, which is represented in communities throughout the country. The organization is powered by 64 volunteer affiliates, many of which have hundreds of members. In every affiliate, five of the members serve in these core volunteer leadership roles:

- Affiliate Coordinator
- Event Coordinator
- Media Representative
- Education and Outreach Coordinator
- Advocacy Coordinator

In addition to the 64 affiliates, Community Representatives volunteer for the organization in an additional 30 communities and focus their efforts on advocacy and outreach to local healthcare professionals.

This formal volunteer structure has served as a driving force behind the organization's tremendous growth. During the recent economic downturn, when many other non-profits were languishing, the Pancreatic Cancer Action Network expanded the number of supporters who joined the fight against the disease, increased the amount of events hosted across the country, and elevated the organization's impact at the local level, thanks entirely to its dedicated volunteers.

In 2010-'11, volunteers raised nearly \$7.8 million gross, an amount representing more than half of the organization's overall annual budget. This figure was a 25 percent increase in gross revenue dollars over the previous fiscal year.

“One person cannot create the momentum. It takes an army of volunteers. It truly makes a difference and I believe with everyone's help, one day a cure for pancreatic cancer will be discovered.”

— Laura Daskalova
Community Representative
Lexington, KY



Hundreds gather at PurpleStride Philadelphia on November 6, 2010.

ONE TEAM, ONE VISION

The efforts of Pancreatic Cancer Action Network volunteers resulted in an extremely successful year in 2010-'11. As the organization's "troops on the ground," they advanced the organization's comprehensive approach to fighting pancreatic cancer with impressive results shown in several key areas.



FUNDRAISING AND AWARENESS EVENTS

In 2010-'11, volunteers held 162 affiliate events such as PurpleStride, PurpleRide, PurpleBowl, PurpleSwim, and PurpleLight Vigil for Hope, and we also benefited from more than 323 third-party events. In total, all of these events grossed more than \$7.8 million.



ADVOCACY

Advocacy volunteers sent more than 26,000 messages to Members of Congress, arranged visits to 85 local congressional offices, attended town hall meetings, and secured 588 public proclamations in recognition of November as Pancreatic Cancer Awareness Month.

Volunteers representing every state joined us in Washington, D.C., to participate in the fifth annual Pancreatic Cancer Advocacy Day to advocate for increased federal research funding and support for the *Pancreatic Cancer Research & Education Act* (S. 362/H.R.733).



MEDIA AWARENESS

Media volunteers across the country shared their stories, secured local media time for our public service announcements, and garnered coverage for local events.

In 2010-'11, thanks to volunteer support, the organization registered 2,300 media hits with a reach in excess of 975 million impressions.

OUTREACH TO HEALTHCARE PROFESSIONALS

Volunteers hosted information tables at health fairs, gave presentations at hospitals, rotary clubs and schools, and raised awareness in their local healthcare communities.

In 2010-'11, the organization saw a 44 percent increase in the number of informational packets volunteers delivered to healthcare professionals around the country, informing them of our Patient and Liaison Services, or PALS, program.

TEAMHOPE

TEAMHOPE comprises volunteers who participate in races around the country to raise funds and awareness for pancreatic cancer. In 2010-'11, more than 170 runners and walkers took part in one of three partner races in Seattle, Miami and Los Angeles, or signed up as Hope Runners or Hope Champions to run in local races of their choosing, wearing the TEAMHOPE jersey. Through these efforts, TEAMHOPE participants raised more than \$319,000.

“I will never forget the reaction of two nurses on my first health professional visit. They couldn't stop thanking me for letting them know about the Pancreatic Cancer Action Network resources. One said, ‘We finally have something to give pancreatic cancer patients!’ “

— Teri Larson
Education & Outreach Coordinator
Twin Cities

DONOR AND CORPORATE RELATIONS

The generous donations of hundreds of committed individuals, foundations and corporations throughout the year support our comprehensive approach to fighting pancreatic cancer. This critical support allows us to expand the essential services we provide, fund innovative research and build a comprehensive pancreatic cancer research community.

ABBY SOBRATO: PAYING TRIBUTE TO A CHERISHED WIFE, MOTHER AND COMMUNITY VOLUNTEER



Abby and John Sobrato

Those who knew Abby Sobrato were as inspired by her benevolence as they were by her perpetually optimistic attitude toward life, according to her husband, John Sobrato.

In addition to her roles as a devoted wife to John and a loving mother to her sons John and Jeff, Abby was a passionate philanthropist, supporting many causes that were dear to her, especially those related to education.

After she was diagnosed with pancreatic cancer in October of 2009, Abby still maintained her optimism, which helped her distraught family cope as they supported her during her illness. After she succumbed to the disease in May 2010 at age 50, John considered ways to honor her memory.

As a tribute to her philanthropic spirit, John funded the Abby Sobrato Innovative Grant Award in 2011. Totaling \$200,000, the two-year Innovative Grants furthers the development of new and innovative approaches to treating the disease, including those that have shown promise in treating other forms of cancer.

“The outcomes are so terrible for this disease, it seemed to me that the best thing I could do was to support research. I felt one of the most effective ways I could help was through the Pancreatic Cancer Action Network’s Innovative Grants program. This was an easy decision for me.”

— John Sobrato, noted philanthropist

TEMPUR-PEDIC® DEEPENS ITS SUPPORT OF THE CAUSE THROUGH THE HUGS BACK CAMPAIGN



Tempur-Pedic International Inc., the leading manufacturer, marketer and distributor of premium mattresses and pillows worldwide, continued to serve as the Pancreatic Cancer Action Network’s most committed corporate sponsor, having raised more than \$800,000 to date for the cause.

This year, Tempur-Pedic continued to maximize financial support by providing its retailers and customers with two ways to get involved in the fight against pancreatic cancer. First, and new in 2010, Tempur-Pedic contributed \$10 to the Pancreatic Cancer Action Network for every consumer who tested a Tempur-Pedic mattress at a participating retailer in November. Further, Tempur-Pedic introduced a new, limited edition of its popular My Tempur-Pedic Teddy Bear®. Twenty dollars from the sale of each bear sold supported the Pancreatic Cancer Action Network’s mission to advance research, support patients and create hope for those affected by the disease.

Monies raised through Tempur-Pedic’s latest efforts funded the 2011 Tempur-Pedic Retailers Career Development Award for Kenneth Olive, PhD, an Assistant Professor of Medicine and Pathology at the Herbert Irving Comprehensive Cancer Center at Columbia University Medical Center.

"Those diagnosed with pancreatic cancer face daunting survival statistics and an uphill battle during treatment," said Rick Anderson, President of Tempur-Pedic North America, LLC. "We have experienced again and again the incredible passion and dedication of the Pancreatic Cancer Action Network team, who work tirelessly to defeat this dreaded disease. We couldn't be more pleased to be a part of helping move closer to a cure every day."



From left, Tempur-Pedic International, Inc. CEO Mark Sarvary; Pancreatic Cancer Action Network President and CEO Julie Fleshman; Tempur-Pedic North America, LLC President Rick Anderson and Pancreatic Cancer Action Network National Board of Directors member and survivor Stu Rickerson.

THANK YOU

We wish to acknowledge all of our generous donors and supporters who make it possible for us to broaden our reach, deliver world-class programs, and advance our mission in the fight against pancreatic cancer.



“No organization I’ve found is as focused on every aspect of pancreatic cancer as the Pancreatic Cancer Action Network. It deals with issues facing the pancreatic cancer community strategically and comprehensively. I am honored to help the cause by serving on its Board of Directors and watching its empowered volunteers achieve incredible results.

“To begin to improve the outcomes for this disease, we need to help all these passionate advocates speak out, raise awareness and work together. We must also encourage everyone interested in or affected by pancreatic cancer to do

whatever they can do to help. I strongly believe that with continued and expanded donor support, and the Pancreatic Cancer Action Network’s comprehensive approach to fighting the disease, these efforts will succeed, and new scientific discoveries are going to make a momentous difference in the fight against this disease in the months and years ahead.”

— Stuart Rickerson
6 1/2 year pancreatic cancer survivor
Member, National Board of Directors
Pancreatic Cancer Action Network

Cumulative Lifetime Giving

\$1,000,000+

Continental Development Corporation
Genentech/OSI Oncology

\$500,000-\$999,999

Blum-Kovler Foundation
Eli Lilly and Company
The Palette Fund, Inc.
Tempur-Pedic North America, LLC
Viragh Family Foundation

\$250,000-\$499,999

Bristol-Myers Squibb Company
The Carole and Robert Daly Charitable Foundation
Fredman Family Foundation
Michael Sweig Foundation
The Seena Magowitz Foundation, Inc.
Ambassador Cynthia Stroum SuperGen, Inc.
Estate of Bonnie Tobin
Z Gallerie

\$100,000-\$249,999

Angus Mitchell Foundation
Aventis Pharmaceuticals
Bank of America Foundation
Braman Family Foundation
Jones Day
Zorina R. Kroop
Jason Kuhn
Leibowitz Family Foundation
Laurie and Paul L. MacCaskill
Michael and Cindy Landon Foundation
Michael C. Sandler and Brenda R. Potter 1998 Trust
OSI Pharmaceuticals
Patty Boshell
Pancreatic Cancer Foundation
Jai Pausch and Family
Pfizer
The Riordan Foundation
Roche Laboratories, Inc.
Sanofi Aventis
Sharon Schwartz
John M. Sobrato and Family
Star Magazine
Terry and Jane Semel Charitable Foundation
Constance Ann Williams

\$50,000-\$99,999

Abraxis Bioscience, LLC
Amgen
Mr. and Mrs. Chris Anderson
Anonymous Family Foundation
The Bernard Lee Schwartz Foundation, Inc.
Nanci Caldwell
Cantor Fitzgerald
Daniel Kleiman Fund
Dr. Laurence A. Mack Memorial Fund
The Elsie and Marvin Dekelboun Foundation, Inc.
Frank H. Olson FBO
Graphic Solutions Group, Inc.
The Jeanenne Thompson Foundation, Inc.
John and Mary Pfouts (CRUT) Trust
The Kenan Family Foundation
Mr. and Mrs. David H. Koch
Estate of John Meyer
Millennium Pharmaceuticals
Polo/Ralph Lauren Corporation
Rensselaer Honda
The Sharon Roberts Pancreatic Cancer Foundation
The Shirley Hobbs Martin Memorial Fund
Mr. and Mrs. Marc I. Stern
Bradley Tabach-Bank
Gordon W. Williams

\$25,000-\$49,999

Sheila Allen
The Andrew Gomez Dream Foundation
Tammy and Brandon Andries
Anne and Mead Montgomery Family Foundation
Bank of America
Cheri Boublis
Brannin Charitable Foundation Trust
The Broad Foundation
Caplan Family Fund
Circle of Hope Bracelets
CyberKnife Society
Mr. and Mrs. Bruce Dachis
Nancy M. Daly
Candy and Eddie J. DeBartolo, Jr. and Family
Detroit Lions Charities
Dick & Sally Brickman Fund
Disney Worldwide Services, Inc.
Edelman Public Relations
Edward J. Friedman Foundation, Inc.

Sally and Timothy M. Ennis
Enterasys Secure Networks
Estate of Margaret G. Potts
Thomas E. Ferguson
Julie Fleshman and Randy Kennison
Marsha S. Garil
Genoveva Morales Uchalik Pancreatic Cancer Foundation
The George L. Shields Foundation, Inc.
Mr. and Mrs. Alan Gingold
The Goldsmith Family Foundation
Hackers for Hope
Jill Hammerstone
Ruth Herman
HM Insurance Group
Harry Howle
The Hoyt and Viorica Pardee Foundation
ImClone Systems, Inc.
William H. Isacoff, MD
Mr. and Mrs. Mark J. Jennings
John Dunbabin Family Trust
JP Morgan Chase
The Kotick Family Foundation
The Lillian Rogatz Memorial Foundation
Linda Tallen & David Paul Kane Educational Research Foundation
Madison Charitable Foundation, Inc.
Estate Of Cynda Overton Mast
Mr. and Mrs. Douglas R. McKinney
Richard N. Merkin
MGI Pharma, Inc.
Miami Office Systems, Inc.
Captain Richard J. Miller
Morgan Family Foundation
Peter J. Morgan
National Hockey League
Novartis
Nowell Family Foundation
The Oberheide Family Foundation
Ellen Pansky
Pharmacia
Thomas J. Pyden
Walle Ralkowski
Resnick Family Foundation, Inc.
Reyes Family Foundation
Nancy and Stuart Rickerson
Jeffrey A. Ross, PhD
Ross Products Division Abbott Labs
Rudi Schulte Family Foundation
The Saban Charitable Support Fund
Mr. and Mrs. Rock Schnabel
Sealy, Inc.
Amanda Seyfried

* May include gifts in-kind.

Cumulative Lifetime Giving (cont.)

The Sheldon Lischin Foundation, Inc.
 Shirley French Lilac, Inc.
 Signal Hill CW Television
 (KTTC, Fox 47 and Cumulus)
 Simmons
 Sprint Foundation
 Judith Stein, Esq.
 Steven and Julie Brickman Fund
 Strike For The Cure
 USC Norris Cancer Center
 Virginia Mason Medical Center
 Warner Brothers Entertainment, Inc.
 Wasserman Foundation
 Cheryl L. Williams
 Jeffrey Wilson
 Wyner/Stokes Foundation

**Donations received from
 July 1, 2010 to June 30, 2011**

\$200,000+

Blum-Kovler Foundation
 Continental Development Corporation
 Fredman Family Foundation, Inc.
 Genentech, Inc.
 John M. Sobrato and Family
 Tempur-Pedic North America, LLC

\$100,000-\$199,999

Mr. and Mrs. Robert Daly, Sr.
 Zorina R. Kroop

\$50,000-\$99,999

The Bernard Lee Schwartz
 Foundation, Inc.
 Estate of John Meyer
 Ambassador Cynthia Stroum

\$25,000-\$49,999

Dick & Sally Brickman Fund
 Hackers for Hope
 HM Insurance Group
 Jones Day
 Michael and Cindy Landon
 Foundation, Inc.
 Morgan Family Foundation
 National Hockey League
 Nowell Family Foundation
 Pfizer Inc.
 Signal Hill CW Television
 (KTTC, Fox 47 and Cumulus)

Steven & Julie Brickman Fund
 Warner Brothers Entertainment, Inc.
 Cheryl L. Williams

\$10,000-\$24,999

Abbott Laboratories Fund
 John A. Agoglia
 Sheila Allen
 Amgen
 Mr. and Mrs. Chris Anderson
 Greg Armstrong
 Aurora Health Care Foundation
 Richard J. Bernstein
 Brickman Foundation
 C.M.U. Entrepreneurial
 Alumni Association
 Caplan Family Fund
 Mr. and Mrs. Scott A. Cowan
 Mr. and Mrs. Brian Daly
 Linda Daly
 Mr. and Mrs. Robert A. Daly, Jr.
 Detroit Lions Charities
 Dr. John K. McCormick Foundation
 Ed Haggar Family Foundation
 Edward J. Friedman Foundation, Inc.
 Eli Lilly and Company
 The Elsie & Marvin Dekelbourn
 Foundation, Inc.
 Foundation for Christian Stewardship
 James H. Gallant

The George L. Shields Foundation, Inc.
 Graphic Solutions Group
 Heather and Paul G. Haaga, Jr.
 Herman Ahlers Family
 Charitable Foundation
 Hugin Family Foundation, Inc.
 IBM Employee Services Center
 The Jeanenne Thompson
 Foundation, Inc.
 Andrew Jennison
 Natalie Katz
 Kaufman Family Foundation
 The Krishna & Bob Daly, Jr.
 Charitable Foundation
 LF USA
 Luther I. Replogle Foundation
 M. Jean Underwood Irrevocable Trust
 Laurie and Paul L. MacCaskill
 Madison Charitable Foundation, Inc.
 David Mayo
 Peter J. Morgan
 OSI Pharmaceuticals, Inc.

Pitcairn Trust Company
 Thomas J. Pyden
 Nancy and Stuart Rickerson
 The Robert R. Baumann, Jr. Foundation
 Rudi Schulte Family Foundation
 Amanda Seyfried
 Simon and Schuster
 Strike For The Cure
 Tishman Speyer Properties, LP
 Daniel G. Turner
 United World of the Universe Foundation
 Virginia Mason Medical Center
 Volkswagen Group of America, Inc.
 Z Gallerie

\$5,000-\$9,999

Michael Alexander
 American Association for
 Cancer Research
 Tammy and Brandon Andries
 Asuragen
 Bank of America
 Baylor Health Care System
 Bertha Johnson Memorial For PanCAN
 Linda Borsheim
 Mr. and Mrs. Michael W. Bradshaw
 Mr. and Mrs. Matthew Brown
 Cancer Treatment Centers of America,
 Southwestern Medical Center
 Casa Blanca Inn
 Cincinnati Reds
 Cloud Expo, Inc.
 Clovis Oncology, Inc.
 Coventry
 Covex LLC
 Curtis Family Fund
 Keeley L. Dailey
 Cydney Daly
 Candy and Eddie J. DeBartolo, Jr.
 and Family
 Valerie Deneen
 Richard DePosit
 Derrick Ward Memorial Car Show
 DLA Piper LLP (US)
 Donald W. and Susan E. Lewis Fund
 Eagle Bank
 William H. Easom
 Robert Eaton
 Maija and Alvin L. Eerkes
 The Eig Family Foundation
 Emerging Solutions
 Employees Community Fund of
 Boeing California
 EnCana Oil & Gas (USA), Inc.

Sally and Timothy M. Ennis
 Lynn Fastuca
 Film 101 Productions
 Daniel E. Fogelman
 Douglas Frey
 Fried, Frank, Harris, Shriver &
 Jacobson, LLP
 Richard Gaffney
 Enrico S. Gaglioti
 Daryl Geiger
 The George and June Block
 Family Foundation
 Nelson and Diane Gomes
 The GTJ Foundation
 Mr. and Mrs. Bradley L. Gunn
 Hale Thornhill Foundation
 Dorothy and Dr. James R. Hayes
 Hearts Outreach, Inc.
 Henry Warthen Memorial
 Margit Herman
 Harry Howle
 Michael Huffman
 Juli and Herbert Hutner
 Infinity Pharmaceuticals, Inc.
 James W. Buffett Trust Dated 1990
 John Paul Mitchell Systems
 Jeffrey Keil
 Mr. and Mrs. Ted D. Kellner
 The Kenan Family Foundation
 Kent State University-Ashtabula
 Kingstowne Striders
 Mr. and Mrs. Dennis Korn
 Jason Kuhn
 Jennifer L. LaConte
 Cristina LaGrasta
 Lamar Advertising of Scranton
 The Lane Construction Corporation
 Mr. and Mrs. Michael Link
 L'Objet
 Lockton Companies
 Yoshiyuki Majima
 Margaret W. Backner Charitable
 Remainder Uni Trust
 Marianne and Roger Staubach
 Terry Lee W. and F. Douglas McCoy
 Trish McGonigle
 McGonigle Witter Fund
 Melisa H. McNair
 Meschures, Campeas, Thompson,
 Snyder, Pocras, Levin & Dimaggio
 Michael Abelson
 Memorial Foundation, Inc.
 The Honorable Mica Mosbacher
 Newport Harbor Anesthesia
 Consultants Medical Group, Inc.





Noble Metals, LLC
 Novartis
 The Oberheide Family Foundation
 Owens-Illinois, Inc. Fund
 Ellen Pansky
 Pershing Square
 Capital Management LP
 PES Partners, LLC
 Bridget Petru
 Pistone Foundation
 Plotkin Family Foundation
 Gary Poland
 Premier Dealer Services, Inc.
 PTO Treas Center School
 Putt and Poker
 Walle Ralkowski
 Ray Lamay Memorial Fund
 The Reichert Foundation
 Rensselaer Honda
 Resnick Family Foundation, Inc.
 Ressler/Gertz Family Foundation
 Rhode Island Broadcasters Association (RIBA)
 The Robert and Marion Schamann Brozowski Foundation
 Rod Rogers Foundation for Charities Fund
 Crystal Rodriguez
 Jeffrey A. Ross, PhD
 Rudolph and Sletten, Inc.
 Jeanne Weaver Ruesch
 Domenic R. Ruscio
 Salesforce.com Foundation
 Susan and Stephen Scherr
 Jim Schiefelbein

Mr. and Mrs. Fred Segel
 Stonyfield Farm, Inc.
 Dr. and Mrs. Wade Strickland
 Rod Summers
 The Susanne and Gary Tobey Family Foundation
 Texas Knee and Sports Medicine
 Estate of Bonnie Tobin
 Carol Trawick
 United Parcel Service
 University of Minnesota Physicians
 University of Pennsylvania Health System
 Weston Development Company
 Mr. and Mrs. Christopher White
 Patricia B. Wiant
 Robyn M. Williams
 Winship Cancer Institute of Emory University
 Gregory M. Witter
 WSB-TV 2 Atlanta
 Karen Wurtzel, MSW
\$2,500-\$4,999
 Karen Allison
 American Family Mutual Insurance Company
 Anne and Mead Montgomery Family Foundation
 Jane Madelon Anthony
 Appetites On Main
 Apptix
 The ASCO Foundation
 AstraZeneca UK Limited
 Barbara Ann Karmanos Cancer Center

The Barry and Wendy Meyer Foundation
 Susan R. Bennett
 Bershtel Family Foundation
 Bert Smith Oldsmobile, Inc.
 Bob Whitman Research Foundation
 Richard M. Boccabella
 Bonnie Rouse Revocable Trust
 Bernadette Brace
 The Capital Group Companies, Inc.
 Cardinal Health Foundation
 Cargill Incorporated
 The Carrell Clinic
 Catholic Health Initiatives
 Mr. and Mrs. Joe Chappell
 Andrew Chopivsky
 Circle of Hope Bracelets
 Clear Channel Outdoor
 Kelly J. Cooper
 Mr. and Mrs. Ryan Cornelius
 Sharon M. Crnic
 Admiral and Mrs. Dennis Cronin
 CSE Federal Credit Union
 CTCA Professional Corporation of Washington
 Cuna Mutual Group
 Fran Czarnecki
 The David Geffen Foundation
 Stephanie and Ernest Davis
 Debbie Delisle
 Rosalie Dertke
 Deutsch, Inc.
 Ryan Dillard
 Doherty High School
 Jennifer and Steve J. Donahue
 Dorf Haus LLC

Karen Dow
 Michelle and Brian Duff
 E*Trade Financial
 Edward Jones
 Edwards Foundation
 The Eisner Foundation, Inc.
 EnCana Cares Foundation
 Randi A. Engle, PhD
 Joan Enticknap
 Ruth Evans
 Evans-Cockerline Foundation
 Fairmount Park Trust Funds
 Family Therapy Student Association
 Jennifer Firem
 Julie Fleshman and Randy Kennison
 The Florence MacFarlane Martin Memorial Foundation
 Troy Franzen
 Amanda R. Frost
 Fullerton Flyers LLC
 Camille M. and Lawrence Fumarolo
 Marsha S. Garil
 Cynthia W. and Burton Gay
 Greg Geiling
 Mr. and Mrs. Ray Geraldson
 Natalie S. Glance
 Brandy L. Glick
 GM Nameplate, Inc.
 Gold Coast Tickets
 Mr. and Mrs. Kevin Golden
 Good Space, Inc.
 Gornick Fund
 Mr. and Mrs. Thomas Grane
 Stephen J. Guariglia
 Harp Inc., DBA Finn McCool's
 Have A Skate With Bob Foundation
 Mr. and Mrs. Roy Hendin
 Herman Family Joint Venture
 Ruth Herman
 David P. Hetzel
 The High Foundation
 Mike and Liz Hilton
 Jim Horning
 Bob Hunsberger
 Florence Hurita
 Stanley Iezman
 Ilitch Charities, Inc.
 Independent Business Network
 Insurance Women of Greater New Orleans
 Juliana James
 The Jim Haugen Memorial Foundation
 Jones Lang LaSalle

Nicholas Kalikow
 Keefer Family Charitable Trust
 Karen A. Kuhla
 Mr. and Mrs. Thomas Kuhn
 Catherine Lagorio
 L'auberge du Lac
 Bruce Leff
 Joseph Lightsey
 Dale A. Linderbaum
 Gregory Liposky
 Joan M. Mabbutt
 Pamela and Steve Marquardt
 Mary Diaz Pancreatic Cancer Fund
 Richard L. Mason
 Master Tubulars, Inc.
 Mayo Foundation for Medical Education and Research
 McDonald Boersma Hanley Giving Fund
 Dee McGonigle
 McGraw-Hill Companies
 Bruce Mendelsohn
 Methodist Hospital
 MillerCoors
 Theresa Murphy
 Mr. and Mrs. Michael C. Noble
 North Central Surgical Center, LLP
 Novartis Vaccines and Diagnostics, Inc.
 Irine Otfrowski
 Ohio State University
 OHSU Knight Cancer Institute
 Susan Okula
 Oprah Magazine
 Estate Of Cynda Overton Mast
 Pacific Medical
 ParenteBeard LLC
 Sonya A. Parker
 Parkway Ventures, Inc.
 Parag Patel
 PepsiCo, Inc.
 PGA Tour, Inc.
 Pizza By Pappas, Inc.
 Glen A. Pray
 PSS World Medical, Inc.
 PUMP
 Trisha Pursell
 Jeff Rabatin
 Regions Bank
 Reif Family Fund of the Jewish Community Foundation
 Research Now
 Robert L. Dameron Memorial Fund
 Brenda Robinson

Rocky Hill Middle School
 Joseph K. Rogers
 Saint Joseph's Preparatory School
 Seattle Cancer Care Alliance
 Shin Enterprises, LLC
 Sierra Microwave Technology, LLC
 Ramesh Sivakolurdu
 Mr. and Mrs. Randy Smith
 Mr. and Mrs. Marty Smolkowski
 St. Mary Medical Center
 Rick Stern
 Mr. and Mrs. Christopher R. Stevenson
 The Strike Shop, LLC
 Structure Tone, Inc.
 Christina and Richard Tabarrini
 Teresa's Foundation for Pancreatic Cancer
 UBS Realty Investors, LLC
 United HealthCare Services, Inc.
 University Medical Group
 University of California Irvine Medical Center
 University of Michigan Comprehensive Cancer Center
 Verizon Foundation
 VFW-Charles Knaeble Post NO.494
 Virginia Piper Cancer Institute
 Wells Fargo Foundation
 Western Reserve Life Assurance Company of Ohio
 White and Williams, LLP
 Whole Foods Market
 Williams Lea
 Gordon W. Williams
 Robert Wittig
 Sharon Wong
 Wyndham Orlando Resort
\$1,000-\$2,499
 The 100 Mile Man Foundation
 29 St. Mark's Place Restaurant, Inc.
 Abbott Laboratories
 Mary Beth Abdo
 Arianne G. Abela
 Abramson Family Foundation, Inc.
 Brad A. Acker
 Hall Adams, Jr.
 Julian Adams
 Advanced Equities
 The AEC Group
 The Affiliated Group
 Carlito Aguba
 Alcan Cable



All About Family, Ltd.
 Alliant Energy Foundation
 Alton Foundation
 American Bathtub Refinishers
 Lauren Amos
 Angell Family Foundation
 Angler Housing LLC
 Arc Electrical Construction Co., Inc.
 ARM, Inc.
 Allyson Armellino
 Thomas P. Arnold
 Antonella P. Arnone
 Arrow Strategies
 Adrienne Atkinson
 Kevin S. Avery
 Avon Products Foundation, Inc.
 Sherri Baggett
 Mr. and Mrs. Duane Bailey
 Alice B. Baker
 Mark Balaban
 Martin Bank
 The Bank of New York Mellon
 Bruce Bardall
 Bruce E. Barr
 Dafna Bar-Sagi, PhD
 Barse Family Foundation
 Kathleen Barth
 Stuart Baskin
 Annette Bauman
 Susan M. Beecher
 Mr. and Mrs. Edward Beeler
 Robert Begelman
 Believe for Bonnie Charitable Fund
 Betty A. Bell
 Bell Family Foundation
 Richard J. Bell
 Neil Belliveau
 Marlys A. Bennett
 James T. Benton
 The Bereny Family Foundation
 Maris Berg
 Jordan Berlin, MD
 Mary Ellen Berman
 Bernard S & Sarah M. Gerwitz
 Foundation, Inc.
 Dan Bernstein
 Jonathan Bernstein
 Blythe Berselli
 Jill Bertich
 Best Buy Co., Inc.
 Anna Bhatia
 Bianca
 Thomas Biehl

Christie A. Bienema
 Bill and Carolyn Mitchell Foundation
 Lisette Billard
 Mr. and Mrs. Frank Biondi
 Mark Birzell
 Brian Blackledge
 Blackstone Laboratories, Inc.
 Dan J. Blackwood
 Natalie Blake and Steven Schwartz
 Shannon Blakeley
 Dick Bland
 David Bleich
 Steve Blom
 Chris Bondanza
 Allan J. Boscacci
 Lewis Bosworth
 Boulder Resources, LTD
 Susan E. Boyd
 Sally Bradbury
 Eric Branyan
 Paul H. Bringgold
 Bristol-Myers Squibb Company
 The Broad Foundation
 Steven Bronner
 Hsiu-Yen Brosmith
 Charlotte Brown
 David Brown
 Les W. Brown
 Sheila Brown
 BSP Software, LLC
 Buccini/ Pollin Group
 Andy Buchanan
 Roger A. Burch
 Joan Burge
 Gregory Burke
 Kristin M. Burke
 Burton Partners LLC
 Sheryle and Gary Bushaw
 Julie Butler
 Jeffrey Buzen
 C & J Car Show
 Alcan Cable
 Dominique Cain
 Mr. and Mrs. William V. Campbell
 Cancer Treatment Centers of America at
 Eastern Regional Medical Center
 Cancer Treatment Centers of America
 Mr. and Mrs. Scott Cannell
 Christina Capobianco
 Higinia R. Cardenes, MD
 Cardinal Flow Testing
 Carnegie Mellon University
 Carpenter Family Charitable Fund

Carr and Duff, Inc.
 The Carroll & Percy Klingenstein
 Foundation, Inc.
 Carter Lankford CPAs, PC
 Thomas A. Cass
 Margaret Castelli
 Giuseppe Cecchi
 C. Dana Chalfant
 Trent B. Chambers
 Michael Chang
 Jeffrey Chapman
 Charles and Margaret Levin
 Family Foundation, Inc.
 Check Point Software Technologies
 Mr. and Mrs. Russell Cherry
 The Chester Family Foundation
 Chicago White Sox
 Maryanne Chrystal
 Church of the Good Shepherd
 Kelly Ciamarra
 Robert Cignarella
 Circle of Service Foundation
 City of Hope
 The Claire and Don Mittelstaedt Fund
 The Clark Family Private Foundation
 Clear Channel Communications
 Foundation
 Janice Cleland
 Cleveland Clinic
 Debbie Closson
 The Clothes Less Traveled
 Thrift Shop, Inc.
 Pam Cocker
 Cogdell Spencer Erdman
 Adam Cohen
 Elizabeth & Gerald Cohen
 Martin Cole
 Commercial Warehouse & Cartage, Inc.
 Mr. and Mrs. Homer Compton
 Concerto Salon & Spa
 Conde Nast
 Creighton Condon
 The Connection Games &
 Accessories, Inc.
 Susan E. Connor
 Consol Energy, Inc.
 Eric Conway
 William Conway
 Marc Cooper
 Chris Cortazzo
 James C. Costa
 Costco Wholesale Corp.
 Deanna and Mike Courtney



James Courtney, MD
 The Cove Point Foundation
 Margo E. Cowan
 Nancy Cox
 Mr. and Mrs. Charlie Craft
 Mr. and Mrs. Keith Creighton
 Curb Records
 Dr. Bret A. Cuthbertson
 Kenneth D'Ambrosio
 Margaret S. and
 Professor Robert P. Dana
 Carol J. Danielson
 Marjory E. Danielson
 Philip L. Davidson
 Barbara Davis
 Dayton Gypsy M/C
 Sarah Dee
 John Delatour
 Thomas Delatour, Jr.
 Mr. and Mrs. Brian Dempsey



Jacqueline DeRosa and Family
Colleen Desselle
Mr. and Mrs. Andy Detherage
DeWitt Ross and Stevens
Robin Dickhaus
Rosemary Diederich
Ann Dietrich
John Digenan
Dennis DiLucente
Sandra L. Dittmar-Taulbee
Dorf Haus LLC
Jill Doucette
Michael Downing
Drake Enterprises, LTD
Shayla Duda
Duggan Contracting Corporation
Margaret J. Duich
Mr. and Mrs. Gregory Dukat
Jennifer B. Dumesco
Sharon B. Duvall
Julie Dwyer
Thomas Dziwulski
Mr. and Mrs. Charles D. Eastburn &
Wallace Donelson
Lyle Eastham
Mr. and Mrs. Scott Eaton
Wayne Ebel
Michael J. Eckhardt
Ecovate, Inc
Erin K. Edick
Eisai, Inc.
Steven Eisenstadt
E-J Electric Installation Company
El Paso Corporation
Mr. and Mrs. Sheldon F. Eldridge

Ella T. Grasso Lodge No. 2538
Tricia Emerson
Mr. and Mrs. Russ S. Engle
Mr. and Mrs. William J. Engle
Dr. Deborah A. Englert
Barbara Engmann
Enterprise Rent-A-Car Foundation
Epstein Family Foundation
Equifax Foundation
Rebecca Erickson
Marjorie Erickson-Schmid
Nancy J. Eschedor
Esjay Foundation
Barbara Ethington
Dr. George W. Ewell
Frances I. Ewing
Eye Associates Northwest, PC
Falik Family Philanthropic Fund
Paul Farrell
Dan Fawcett
Fednav International LTD
Feinberg Rozen, LLP
Holger Feindt
Catherine Felice
Tim Ferris
Fidelity Bank
Craig M. Filmore
Nancy B. Fisher
Gerrit D. Fitch
Robert Flachs
Suzi Flamm
Gary W. Flater
Justin S. Flippen
Jacqueline Flores
John Folvig

Ford VOME
Forest Creek Eye Center
Forest Park Medical Center
Dennis Fowler
James Foy
Suzanne M. Fradette
Eric Francis
C. Rae Franey
Friends of Elaine Gardner
Mr. and Mrs. Paul E. Fuller
Gloria E. Galvan
Garfield Manor Realty
Rich Garon
Mr. and Mrs. Jerry L. Garrott
Lucia Gasbarri
Mr. and Mrs. Thomas R. Gau
Destiny Gauthier
Jeremy Geelan
Janice G. Gehrke
General Iron Charitable Foundation
General Mills
George W. Snyder, Jr. Memorial Fund
Georgetown University Hospital/
Marketing Department
Mr. and Mrs. Steven N. Gersten
Mr. and Mrs. Peter Getchell
GI Associates, LLC
Betsy F. Giannuzzi
Frank Giove
Linda and Stephen Giove
Rachel Givelber
Matthew Gocker
Mr. and Mrs. Dave Goff
Jay Goffman
Roy Goldberg

David Goldberg
Devorah Goldberg
Stephen B. Goldstein
Goleman Family Trust
Patricia Gonzales
Oi Yin Gonzalez
Mr. and Mrs. Sidney Goodwill
Google, Inc.
William Graham
Jane H. Graml
Grand Savings Bank
Laura R. Grant
Stephany E. and Josef Gray
Graywood, LLC
Great Salt Lake Minerals
Jordan M. Greer
Jean Grem
The Griffith Harsh IV and Margaret
Whitman Charitable Foundation
Grimaldi Foundation
Al Grossich
Richard G. Grotch
Group Health Cooperative of
South Central Wisconsin
GRTMars, Inc.
Guaranty Bank
Sean and Margaret Gunn
Jessica Gurinas
Michelle Hackbarth
Alan Hale
Helen Haller
John Haller
Margie J Hammer
Gabriel J. Hanna
Jane Hanna

Amber Hansen
Debbie C. Hao
Debra Harman
Marvin P. Harms
Harness, Dickey & Pierce
The Harry and Jeanette Weinberg
Cancer Institute at Franklin
Virginia F. Hartley
Hartshorne Plunkard Architecture
Havard and Associates, Inc.
Walter J. Havron
Terry Hawes
Katheime M. Hawkom
Barbara A. Hayes
Barbara Haynes
Jeanine Hays
Hecla Charitable Foundation
Henry Heintz
Heinz - Del Monte
Hekemian & Co., Inc.
Cindy G. Hello
Jill S. Henderson
Mark D. Henderson
Melissa Hernandez
Clifford Hersman
Julie and Bob Hertzberg
Lianne Herzberg
Wendy R. Hetzel
Neil Heuer
HH MedStar Health, Inc.
Grantland R. Hillman
Alan R. Hinds
Mary T. Hogan
Timothy Hogan

Roy R. Hogue
Megan Holder
Mr. and Mrs. Billy H. Holland
Bradford Holtmeier
Jim Holzman
Jeffrey Honickman
Quinn Honore
Lorette M. Hoover
Jan Hopkins
Hospital Business Concepts, Inc.
Hospitality Financial & Technology
Professionals
Housing Authority Insurance, Inc.
Joshua J. Howard
Deborah C. Hsieh
Marianne M. Hubert
Dr. Cynthia Hudson
Kathy A. Hughes
Hugo PTA dba: Oneka Elementary PTA
The Huisking Foundation, Inc.
Hulmeville Enterprises, Inc.
William S. Hutchison
Kevin Hwang
ILC Resources
Illinois Center for Pancreatic and
Hepatobiliary Disease
Walter Imhoff Family
Infinium Crystal Head
Ingenix
Intel Volunteer Grant Program
Islanders Children's Foundation
IWCO Direct
J and J Health Care Systems, Inc.
J.M. Haggar Jr. Family Foundation



The Jaclyn & Sydney Rosenberg Foundation
 Mr. and Mrs. Alan N. Jacobs
 Eliza Jacobs
 Martin Jacobs
 Mr. and Mrs. David Jacobson
 Tammy L. Jajola
 Billy F. Janssen
 Charles R. Jaynes, MD
 Virginia and Stuart A. Jed
 The Jeffrey and Linda Solomon Foundation
 Jeni's Splendid Ice Creams
 John Paul Mitchell Systems
 Johnson & Johnson
 M. Diane Johnson
 Nelson Johnson
 Nicole Johnson
 Mr. and Mrs. Lloyd D. Johnston
 Joint Effort Physical Therapy, LLC
 Elizabeth Jones
 Erica Jordan
 Joseph & Dione Smith Living Trust
 Judy Angelo Cowen
 Charitable Lead Unit Trust
 Michael Julius
 Robert Jury
 Betsy R. Kadwit
 Barbara J. Karlen
 Lisa Karsh

Alexander O. Katano
 Larry Katz
 Leon Katz
 Marcus Katz
 The Kean Theatre, Inc.
 Laura N. Keller
 David E. Kelly
 William P. Kelly
 Kennebunk High School
 Deborah Kents
 Shawn Kerley
 Deborah S. Kern
 Lloyd & Meryl Kern
 The Kerry Group
 Roberta Kessler
 Margaret Keyes
 Yungock Kim
 Kimchuk, Inc.
 Janet Kinnane
 Estate of M. Kinsley
 Gayle Kirker
 JanaKay Kittilson
 Larry Kittoe
 KLA Tencor Foundation
 Eileen Klaus
 The Klein Family Foundation, Inc.
 Debra and Mark Klein
 Jeanette Klein
 Kenny Klein
 David F. Knapp

Knights of Columbus Council #6125
 Knitter's Nest
 Lis Knudsen
 Peter Koffler
 Fritz Kopeinig
 Nickie Kovac
 Michael Krasny
 Gale M. Krause
 Joan I. Kroll
 Eric Kuhn
 Karen Kuhn
 Carole E. Kullmann
 William L. Kunkel
 Robert Kuphal
 Rosemarie Kurtz
 Dr. Antoinette La Belle
 Maria R. Lambing
 Paul Landaiche
 Dr. Nathaniel Landau
 Stewart Lande
 James Landis
 Larry Gatlin Enterprises
 Laurie A. Lartz
 Dennis A. Laskin
 Laurie Laspina
 Laube Technology
 Mary K and Dan Lauderback
 Lauren's Face The Day, Inc.
 Nancy W. Laurie
 Lawrence Leasing, Inc.

Linda M. Lawson
 Mr. and Mrs. David Layden
 Richard Lazar
 Edward J. Lee, Jr.
 Jerry Lee
 Ryder An Lee
 David Lefkowitz
 Mr. and Mrs. David S. Leibowitz
 Karen and John Leier
 Gaea Leinhardt
 Lerner Family Supporting Organization
 John Leupp
 Allyson Levis
 Judith E. Levy
 Ann Lew
 Lexus of Nashville
 Ferne Liez
 Jennifer Li-Hochberg
 Linda & Jeffrey Wolfson
 Family Foundation
 Jordyn Linsk
 Lloyd D. Johnston Trust
 George Loewenbaum
 Rosalie Logsdon
 Lois Zambo, LLC
 Lommen Abdo
 Benjamin London
 Richard And Sandy Lopacki
 Henri Lorberbaum
 Steve R. Lorton
 Los Angeles Breakfast Club
 Mr. and Mrs. Bob Lowe
 Penny Loyd
 Lugo Caravan 071 113 Alhambra
 Jennifer L. Luna
 Roberta and Vic Luna
 Frank I. Luntz
 Susan Lykins
 Mr. and Mrs. Thomas A. Lynch
 Mr. and Mrs. Karl P. Lynott
 Mr. and Mrs. Peter Lynwander
 M3 Insurance Solutions for Business
 Peter Ma
 Karen S. MacCaskill
 Mr. and Mrs. Lyle MacIver
 Doug Mackenzie and Kevin Compton
 Mr. and Mrs. Benjamin C. Madey
 Vern and Betty Maier
 David M. Mamer
 William Manning
 Barbara A. Manny
 Mark Margiotta
 Deborah Marks
 Mr. and Mrs. Kenneth L. Marks

Mr. and Mrs. Robert Marks
 Frank Marshall
 Steve Martin
 David J. Martinson
 Mary Cross Tippman Foundation
 Mary Joanne Felti Revocable Trust
 Robert Masucci
 Mathew Photographic Services
 Erik Matlick
 Laura Matthews
 Brian and Leslie Matthews
 Loma and Ray A. Mattson
 Maxine K. Clark and Robert N. Fox
 Charitable Foundation
 Adrienne D. Mays, DDS
 MB Financial Bank
 Mike Mcauliffe
 Robert McCaffrey
 Mr. and Mrs. Edward T. McCann, Sr.
 Erin McCann
 LeeAnn McCartney
 Daniel P. McCoy
 Ted McCullough
 Nancy I. McDougal
 Kimberly A. McElhany
 Narvel Blackstock and Reba McEntire
 Anne T. McGonigle
 Kathy McGonigle
 Roger McKelvie
 Barbara E. McKenna
 Kathy McKillop
 Mr. and Mrs. John McMahan
 Allan K. McMorris
 Joan McNamara
 Charlie Medelberg
 Medi Weightloss Franchising USA
 Joel S. Meisel
 Anne Meixner
 Joan Meixner
 Melvyn H. and Linda A. Blum
 Charitable Fund
 Craig S. Mende
 Ron Mendelsohn
 Lindsay N. Menninger
 Stefanie A. Merkosky
 J. Kenneth Merten
 Christopher Meyers
 Michael Baker Corporation
 Foundation
 Joerg R. Michelfelder
 Milken Family Foundation
 David L. Miller
 MaryEllen Miller
 Mr. and Mrs. Scott M. Miller





Suzanne Miller
Milliman, Inc.
Mr. and Mrs. Reese L. Milner, II
Andrew Mingle
Minnesota Oncology Hematology
Mr. and Mrs. Joseph M. Miresse
John Paul Mitchell Systems
Robert Mizell
Jason Molino
Moloney Securities Asset
Management
Amy L. Mone
Robert Monnat
Mr. and Mrs. Michael A. Montalto
Montgomery Charitable Fund
Argentina Mooney
Mr. and Mrs. Joseph E. Moran
Jeanne Moretti
The Morgan Family Fund
Morgan Stanley
Christina Morris
David L. Morris
Clark W. Moser
Moses and Afonso, Ltd.
Mr. and Mrs. David F. Moulton
Movin & Groovin 5K, Inc.
Christine F. Moyers
Marilyn F. Mullin

Paul Mullin
Sarah Z. Munday
Karen Munson
John Murphy
Kevin Murphy
Nancy Murphy Bowles
Kelly Murtaugh
Julie A. Murtha
Mutual Bank
The National Christian Foundation
Navitus Health Solutions, LLC
The Nebraska Medical Center
Neimand Collaborative
Monica Nelson
New England Patriots
Newfield Exploration Company
Chris Newkirk
Jerry Newman
Newmark Knight Frank Smith Mack
Nichols Co.
Matt Nichols
Mr. and Mrs. Ronald C. Niendorf
Rama I. Nilsen
Mr. and Mrs. John S. Nilsson
Pamela Nist
Andrew Noll
North Penn Alumni Athletic
Association

Northwest Community Hospital
Karen Nusbaum
Peter Nussbaum
Ruth Nutt
Erle Nye
Oakland County Credit Union
Ronnie Oanono
Mr. and Mrs. Mauricio Oberfeld
Stan C. Oberg
Mr. and Mrs. William R. Oberheide
OCCU Bowlathon
Mr. and Mrs. Joseph C. Odell
Oinoussians of America
Mr. and Mrs. Thomas J. O'Keefe
Patrick O'Leary
Jeanne Olivier
Jerry Orellana
Ann Orkin
Sabino Sam Pace
Mr. and Mrs. Dean Pachosa
Patrick T. Padden, Jr.
Lynn Page
Sophia Y. Pak, MD
Elizabeth Palmer
Nicole Palumbo
Panorama Meats, Inc.
Elizabeth Pantaleo
Matt Pappas
Kary Parker

Elizabeth Pausch
Danielle K Pease
Richard D. Pence
Sharon Perry
Pershing LLC
Peter's Weston Market
Gloria Petersen, PhD
Joseph Petri
Mr. and Mrs. Carmine Petti
Pfizer Foundation
Rick Pflieger
Stephen Pflieger
Pharmaceutical Research and
Manufacturers of America
Physicians Link Centers, Inc.
Vincent Picozzi, MD
Danielle Pinet
David Pinter
Thomas R. Pirelli
Frank Plastina
PNC Institutional Investments/ Fund
For Charitable Giving
Craig Poisson
Dr. and Mrs. Michael Pokroy
Police And Fire Federal Credit Union
Poms & Associates
Insurance Brokers, Inc.
Jeffrey S. Pope
Terri Poston
PPD Development, LP
Mr. Bruno Pradal
PrimeMed, P.C.
Mary Katherine Pritchard
Karen Provenzon
Providence Cancer Center
Lisa Prucz
Pulverizer Entertainment
Purdue Pharma L.P.
Mr. and Mrs. Rocco Quartana Jr.
Mr. and Mrs. Allen Questrom
Tom Quinlan
R & L Donner Trust
Mr. and Mrs. William E. Rabb
Julie A. Rademacher
Narayanan Radhakrishnan
Charlotte Rae
Mr. and Mrs. Michael Rapisura
Patricia Rathbone
Wanda Rayle
Raymond James Charitable
Endowment Fund
Redpath Integrated Pathology, Inc.
Reed Smith LLP
Regional Care, Inc.
Lou Rehak

John Reichard
Leland Reicher
Mr. and Mrs. Kenneth M. Reid
Joyce Revell
Mr. and Mrs. Terry P. Rhadigan
Brigitte Rhinehart
William Rhoten
Karen M. Rice
Richard and Margaret Tempero
Family Foundation, Inc.
Richard and May Wilson Family Fund
John Richards
John M. Richards
Mr. and Mrs. Michael Richards
Mary Kay Richter
Donna and Howard Rines
Robert M. Chase Family
Charitable Fund
Robert T. Smutzer Memorial Fund
Ruth Roberts
Anne Marie Robertson
Rochester Community and
Technical College
Rockwell and Marna Schnabel
Foundation
Timothy Rodber
Diane S. Rosenberg
Mr. and Mrs. Mark Rosenthal
Adelaide F. Roslund
Helene J. Ross and Family
Mary Ann Ross
Royal Oak Surgical Associates, P.C.
The Ruesch Center for the Cure of
GI Cancers, Georgetown
Ruth Ruffer
Bruce W. Ruminski
Nancy Rush
Bill Ruslink
Mr. and Mrs. John C. Ryan
Kenneth J Rybicki
Joanna Rykoff
Mr. and Mrs. Robert Rynbrandt
Betsy and Anoush Sadegh
Howard Safran, MD
Tanya Samborsky
San Sebastian Winery
Sandra and Malcolm Berman
Cancer Institute at GBMC
Susan Santangelo
Scott Santy
Mrs. Jill Peet Saponaro
Mr. and Mrs. Mark Sarvary
Kurt Sauer
Scan Design

James Scancellia
William Scanlan, Jr.
SCE Federal Credit Union
Schaeffer Family Foundation
Mr. and Mrs. Martin Schechter
Michael Schechter
Jerry Schiff
Nadine Schiff
Orville Schmidt
Burton Schnierow, DDS
David Schor
Tina Schreiman
Mr. and Mrs. John Schulman
David Schumaker
Elizabeth Schwartz
Arlene Schwartzberg
Scottrade
Seafood Center
Mr. and Mrs. Ryan L. Secrist
Julie Seibel
Mr. and Mrs. Alex Seldin
Peter Seidler
Robert Seidler
Seifert Family Foundation
Robert Sell
Bobbie Selman
Estate of Beverly Jean Settle
Jonathan Shamon
William Shanley
SHAPCO
Mitchell Shear
Kate V. Sheerin
Shirley Hobbs Martin Memorial Fund
Janice Shrader
Jeff Shrader
Sigal Construction Corporation
Robert Signorello
Sandy Silbar
Dr. Rosanne K. Silberman
Sills Foundation, Inc.
Diane Simeone, MD
Michael A. Simmons
Travis Simpson
Patti and Richard Sinaiko
Betty J. Singer
Gregory D. Sirko
Sizzler USA, Inc.
Tom W. Slack, Jr.
Jack Slobodin
Abby L. Smith
Mr. and Mrs. Curtis R. Smith
James Smith
Jennifer Smoak
Rachel Smoak



Jeanine Sobek
 Harold Sparks
 Susan Spass
 Mr. and Mrs. Mark T. Spears
 Spicehandler Family Charitable Fund
 Jim Srite
 St. James United Methodist Church
 St. Louis University Cancer Center
 St. Louis University Hospital
 St. Luke's
 United Methodist Church, Inc.
 St. Paul Plumbing & Heating Co.
 Staples
 Justin Steil
 Judith Stein, Esq.
 Stanley M. Stein
 Diane Steinberg
 Stellar Foundation, Inc.
 Mr. and Mrs. Thomas A. Sterken
 Kimberly Stevens
 Janice I. Stewart
 Michael Stewart
 Sticky Ribhouse, LLC
 Robert Stiratelli
 Mr. and Mrs. David Stone
 Robert Stone
 Mr. and Mrs. Gary A. Strand
 Vikki Strand

Barbara C. Stratton
 A. W. Strickland
 StubHub
 Judith Sudbury
 Daphne Sumner
 Judith Sundberg
 Susan and Richard Hare
 Family Foundation
 Shannon Szczerbiak
 Mr. and Mrs. Jordan Tabach-Bank
 Taco Bell of NW Ohio
 Tangies Tangies
 Ben Tarble
 Patti Taruscio
 Mr. and Mrs. Mitch Taubin
 TCF Foundation
 Team Mossman, LLC
 Mr. and Mrs. John Tederous
 Jim L. Teesdale
 Tekelec
 Tekelec Corporate
 Temple University Student Body
 Michael A. Tennyson
 Texas Health Center for
 Diagnostics & Surgery
 Texas Spine Institute
 Manish Thakur
 Sumitra Thinagara Sundram

Thomas Advisors, Inc.
 Michelle C. Thomas
 Tim Nesvig Family Foundation
 Deborah & Randy Tobias
 TogoRun
 Nancy and Mike A. Tomaro
 Melanie Toolan
 Town Bank/ Wintrust Mortgage
 Mr. and Mrs. Warren Trepp
 Triad Financial Services, Inc.
 Pat Trigonoplos
 Frank Troost
 Scott Troost and Family
 Truist
 Trusted Mission Solutions, Inc.
 Bonnie Tuggle
 Dr. and Mrs. Martin Tullus
 TU PanCAN
 Turner Construction Company
 Jane C. Turner
 Robert W. Tyler
 UBS Financial Services, Inc.
 UMB Bankcard
 Unisyn Medical Technologies, Inc.
 Unitarian Universalist Congregation of
 Gwinnett
 United Magnetic Products, Inc.
 United Steelworkers Local 3657

University of Pittsburgh
 Medical Center
 Clifford Unkefer
 UNMC Physicians
 Stanley Urquico
 UW Carbone Cancer Center
 Lana and Tommy Valenta
 JaneMarie Valentine
 Trevor Valentine
 Valero Energy Foundation
 Brooke Valet
 Steven L. Valuch
 Jacques Van Dam, MD
 Barbara Vance
 Steve J. Van Tassel
 Venable Foundation, Inc.
 Robert Veninata
 Vetter Foundation
 Richard Vezina
 Vibrant Health Alliance
 Mr. and Mrs. Clinton A. Vince
 The Virtus Group
 Vocollect, Inc.
 Bill Wachter
 James Waldeck
 Mr. and Mrs. William O. Walker
 Judge Arthur E. Wallace
 Carrie Wallin

Wallingford Swarthmore
 School District
 Walmart Stores, Inc.
 Patty Walsworth
 Mr. and Mrs. Jeff Walter
 Joan Warwick
 Ralph Waters
 Waunakee Wrestlebackers Cash
 Eileen M. M. Wawrzynek
 Lisa Webster
 Andrew Weigel
 Mr. and Mrs. Michael B. Weinstein
 Dr. and Mrs. Jonathon Weisz
 Mr. and Mrs. Frank G. Wells
 Werner Foundation
 H. Allan Werst
 West Monroe Partners
 West Windsor Plainsboro
 High School South
 Western Bake Sale
 Joseph H. Westcott, Jr.
 Coralie D. Weston
 Weston Outpatient Surgery Center
 Wheaton Franciscan Healthcare
 Duncan White
 Sam Whiting, MD
 Beverly Williams and Family
 Dr. Larry A. Williams

Mr. and Mrs. Larry E. Williams
 Mr. and Mrs. Scott J. Williams
 Candis F. Wilson
 Wine and Design
 Patricia Winterburn
 Kristin Witting
 William Wolak
 Robert Wolf
 Sarah Wolf
 Lorraine A. Wolrich
 Gerald Woltermann
 Kathryn and Seth Womble
 Shannon M. Wood
 Heath Woodrum
 Helen H. Yen, MD
 Charles J. Yeo, MD
 Nancy Young
 Lorene Zalick
 Theodore K. Zampetis
 Ryan D. Zaritsky
 William A. Zatorski, Jr.
 Zazz Writing, Inc.
 ZBI Employee Allocated Gift Fund
 Selim K. Zilkha
 Zissu Family Foundation
 Terry Zundel

STATEMENTS OF FINANCIAL POSITION

June 30, 2011 and 2010

ASSETS	2011	2010
Cash and cash equivalents	\$2,476,755	\$ 76,514
Investments	4,075,760	5,015,186
Pledges receivable, net	1,162,754	1,526,933
Sundry receivables	417,197	212,932
Inventory	165,850	81,212
Prepaid expenses	412,118	301,012
Property and equipment, net	848,984	539,106
Other assets	77,305	113,513
TOTAL ASSETS	<u>\$9,636,723</u>	<u>\$7,866,408</u>
LIABILITIES AND NET ASSETS		
Liabilities		
Accounts payable	\$ 498,639	\$ 491,790
Accrued expenses	189,925	373,009
Grant obligations	2,167,535	1,241,747
Deferred lease liability	413,728	
Capital lease obligations	25,882	33,653
Total Liabilities	3,295,709	2,140,199
Net Assets		
Unrestricted	5,331,835	4,411,773
Temporarily restricted	1,009,179	1,314,436
Total Net Assets	6,341,014	5,726,209
TOTAL LIABILITIES AND NET ASSETS	<u>\$9,636,723</u>	<u>\$7,866,408</u>

These financial statements were abstracted from Pancreatic Cancer Action Network's June 30, 2011 and June 30, 2010 financial statements which were audited by Windes & McClaughry Accountancy Corporation. Because the information does not include all the disclosures required by U.S. generally accepted accounting principles, it does not purport to present Pancreatic Cancer Action Network's financial condition or results of activities. A copy of the audited financial statements is available on the Pancreatic Cancer Action Network's website at www.pancan.org and can be provided upon request from our national office.

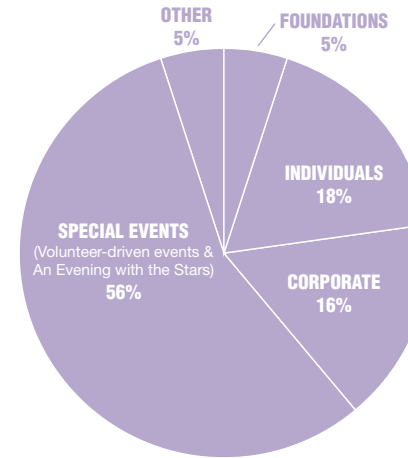
STATEMENTS OF ACTIVITIES

Years ended June 30, 2011 and 2010

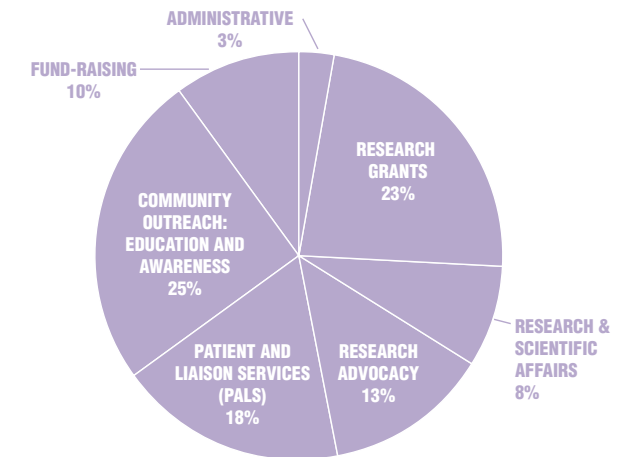
INCOME	2011	2010
Contributions	\$ 5,079,721	\$ 5,587,415
Special events, net*	7,316,650	5,711,899
Store sales, net	234,447	161,384
Net investment return and other	372,162	356,215
TOTAL INCOME	13,002,980	11,816,913
EXPENSES		
Program Services		
Research	3,916,466	3,083,975
Advocacy	1,582,822	1,442,993
Patient services	2,274,340	2,024,907
Community Outreach	3,050,217	2,514,045
Total Program Services	10,823,845	9,065,920
Supporting Services		
General and administrative	406,765	341,283
Fund-raising	1,157,565	921,631
Total Supporting Services	1,564,330	1,262,914
TOTAL EXPENSES	12,388,175	10,328,834
INCREASE IN NET ASSETS	<u>\$ 614,805</u>	<u>\$ 1,488,079</u>

* Special events are presented net of direct costs of \$1,287,601 and \$1,162,750 in 2011 and 2010, respectively.

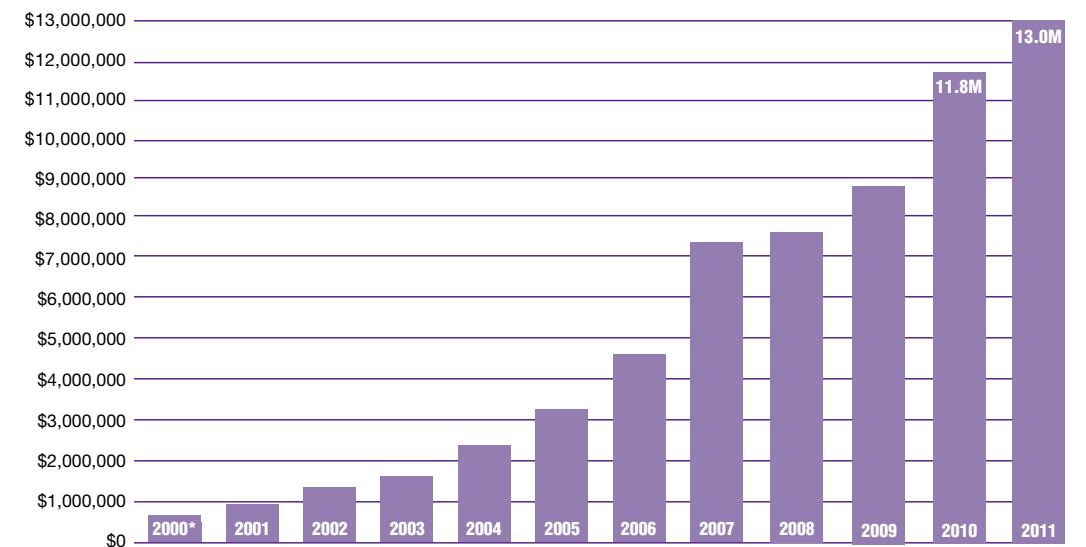
INCOME SOURCES 2011



EXPENSES 2011



INCOME 2000-2011



*Includes the 16-month period from February 15, 1999 to June 20, 2000.